

Air Cooled Vibration Test Systems

i210/06



i-series (i210)

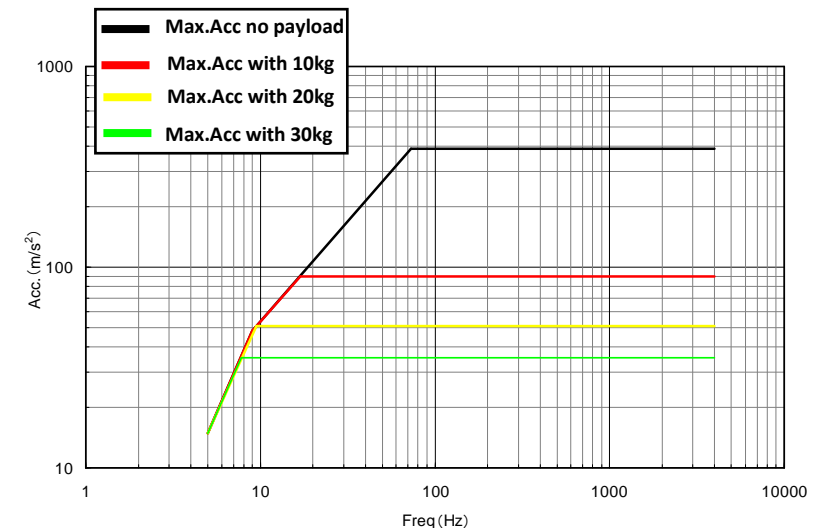
System Key Features

- 20% higher velocity than many other manufacturer's Systems.
- Vibrator has High Cross Axial Stiffness allowing increased offset load capability
- Air intake designed using modern fluid dynamics for reduced System noise.
- All models can be directly coupled to climatic test chambers
- Lin-E-Air Trunnions are standard, required for tests at 5 Hz and high Displacements
- System has a BNC to microdot interconnection box mounted on the vibrator
- Inter connection between Vibrator and Amplifier allows improved access to the test item
- Extended displacement versions available up to 100mm with J-series
- ECO option available as Standard

System Specifications		
System Model		i210/06
Freq. Rang (Hz)		0 – 4000
Force	SINE (kN)	1.17
	RANDOM (kN rms)	0.59
	SHOCK (kN)	1.17
Max. Acc.	SINE (m/s^2)	390
	RANDOM (m/s^2 rms)	137
	SHOCK (m/s^2)	390
Max. Vel.	SINE (m/s^2)	0.85
	SHOCK (m/s^2)	0.85
Max. Disp.	SINE (mm^{P-P})	30
	MAX. TRAVEL (mm^{P-P})	40

Vibration Generator (i210)	
Armature Mass (kg)	3
Armature Diameter (mm)	128
Armature Resonance (Hz)	> 3200
Allowable eccentric moment (N.m)	160
Maximum Payload (kg)	120
Dimensions (mm) W×H×D	868x700x458
Stray Field (mT) *1	0.6
Mass (kg)	350
Power Amplifier (VA06-i 10)	
Max. Output [kVA]	0.6
Dimensions (mm) W×H×D	580x1750x850
Mass [kg]	200

Shaker nomogram

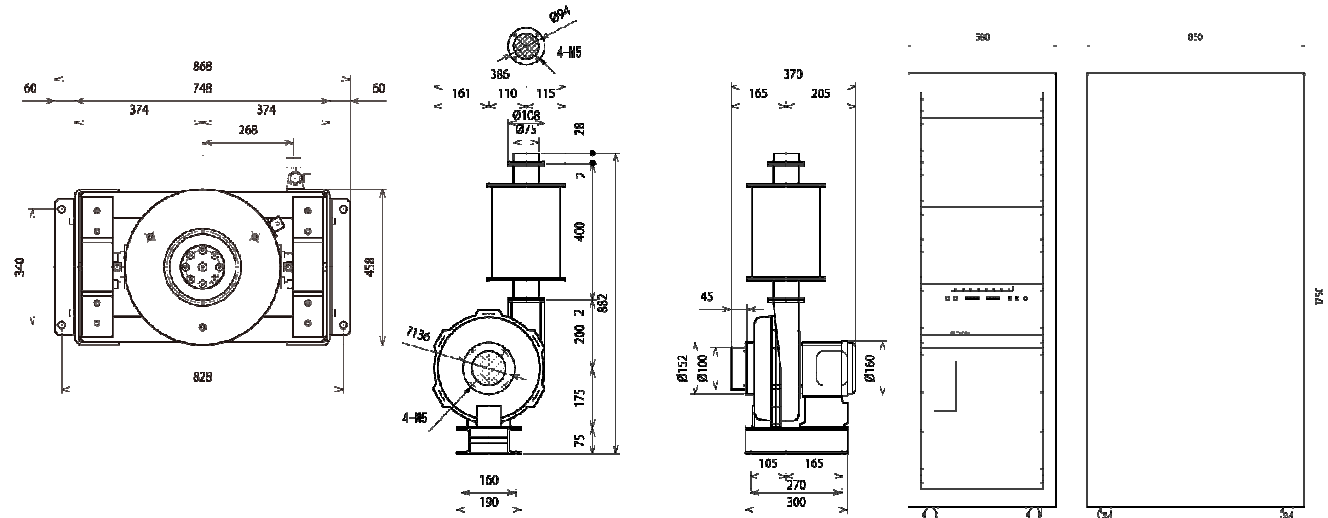


Air Cooled Vibration Test Systems i210/06

Cooling		
Blower	Dimensions (mm) WxHxD	386x882x370
	Mass (kg)	22
Cooling Air Flow (m ³ /s)		7.7
Environmental Data		
Power Requirement (kVA)		3.7
Input Voltage Supply (3 ϕ , V)		200-440
Compressed Air Supply (MPa)		0.6
Working Ambient Temperature	Shaker (°C)	0 – 40
	Amplifier (°C)	0 – 40
Acoustic Noise at 1m distance *2	Shaker (dBA)	–
	Amplifier (dBA)	–
	Blower (dBA)	–

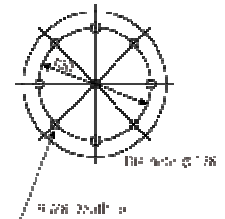
*1– measured at 150mm above armature , reference data

*2 – with the ECO option this will be reduced



Vibrator Key features

- Patented upper (armature) support system Parallel Slope Guide (PSG).
- High Armature resonance
- A body positioning system for the LIN-E-AIR systems –for both in vertical and horizontal operation
- Cooling fan with a noise reduction silencer is fitted as standard
- A gear wheel is provided to rotate the shaker in the horizontal mode



IMV Corporation
European Technical Centre
Devonshire Business Centre
Works Road, Letchworth, Herts,
SG6 1GJ, United Kingdom
Tel: +44(0)1462 488320
Web: www.imv-tec.com



DISTRIBUTORS AREA
FOR LABEL